

- 1
- 2
- 3
- 4
- 5
- 6
- 7
- 8
- 9
- 10
- 11
- 12
- 13
- 14
- 15
- RH

MATERIAL

Glass-fibre reinforced polyamide based (PA) technopolymer, black colour, matte finish.

PACKING RING

NBR synthetic rubber.

MAXIMUM CONTINUOUS WORKING TEMPERATURE

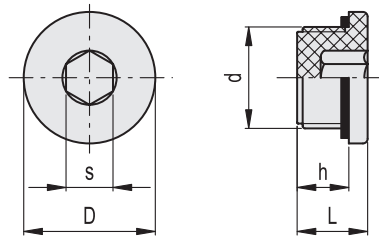
212°F (100°C).

TECHNICAL DATA

The tightening torque indicated in the table guarantees an optimal tightness, keeping the packing ring in the correct position.



ELESA Original design



INCH

Code	Description	d	h	s	D	L	Tightening torque [ft·lb]	⚖
961034	TCE.3/8 NPT	3/8 NPT	0.35	0.31	0.87	0.51	2+4	0.01
961035	TCE.1/2 NPT	1/2 NPT	0.43	0.39	1.1	0.59	2+3	0.02
961036	TCE.3/4 NPT	3/4 NPT	0.47	0.47	1.26	0.65	2+4	0.03